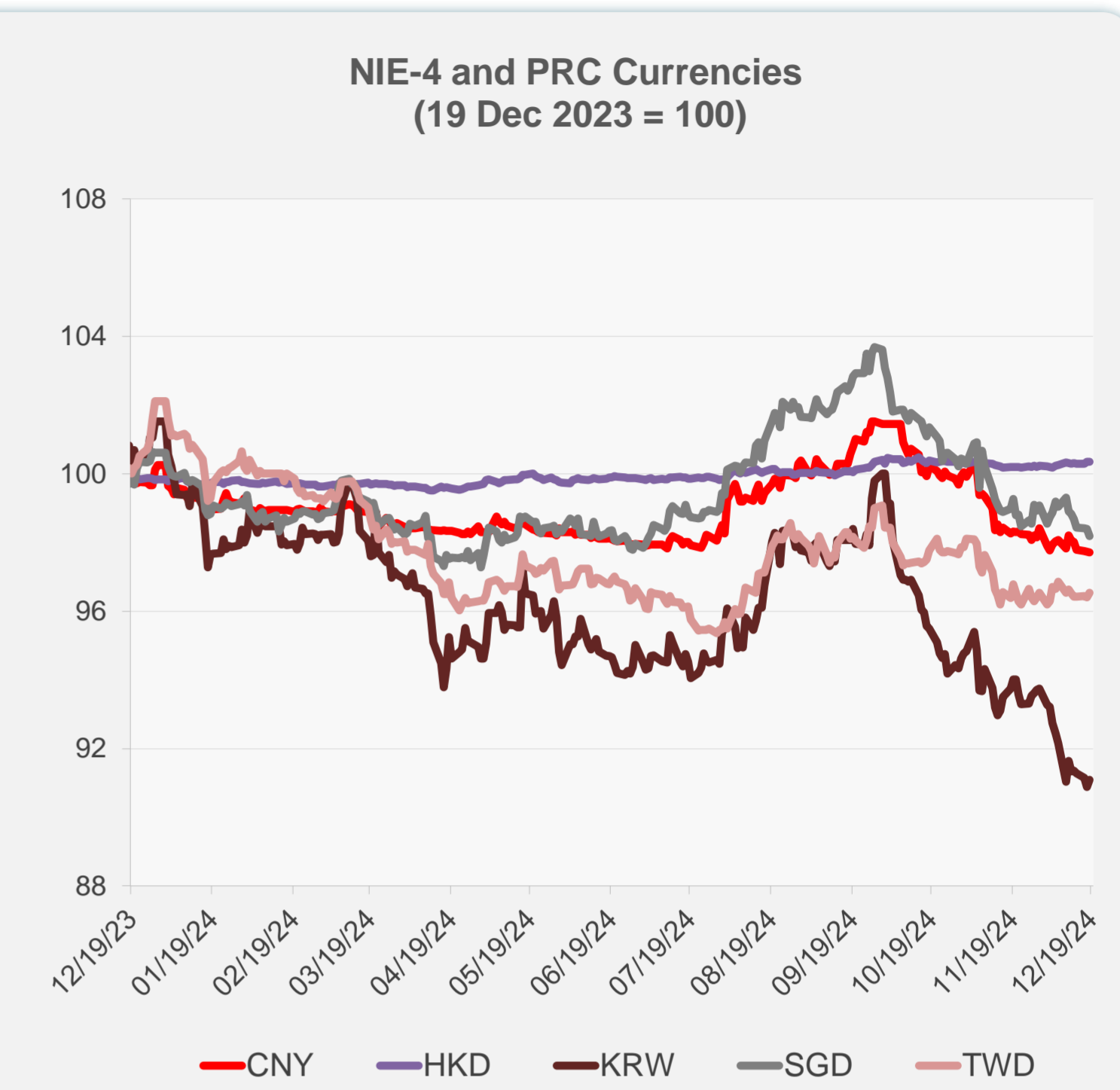
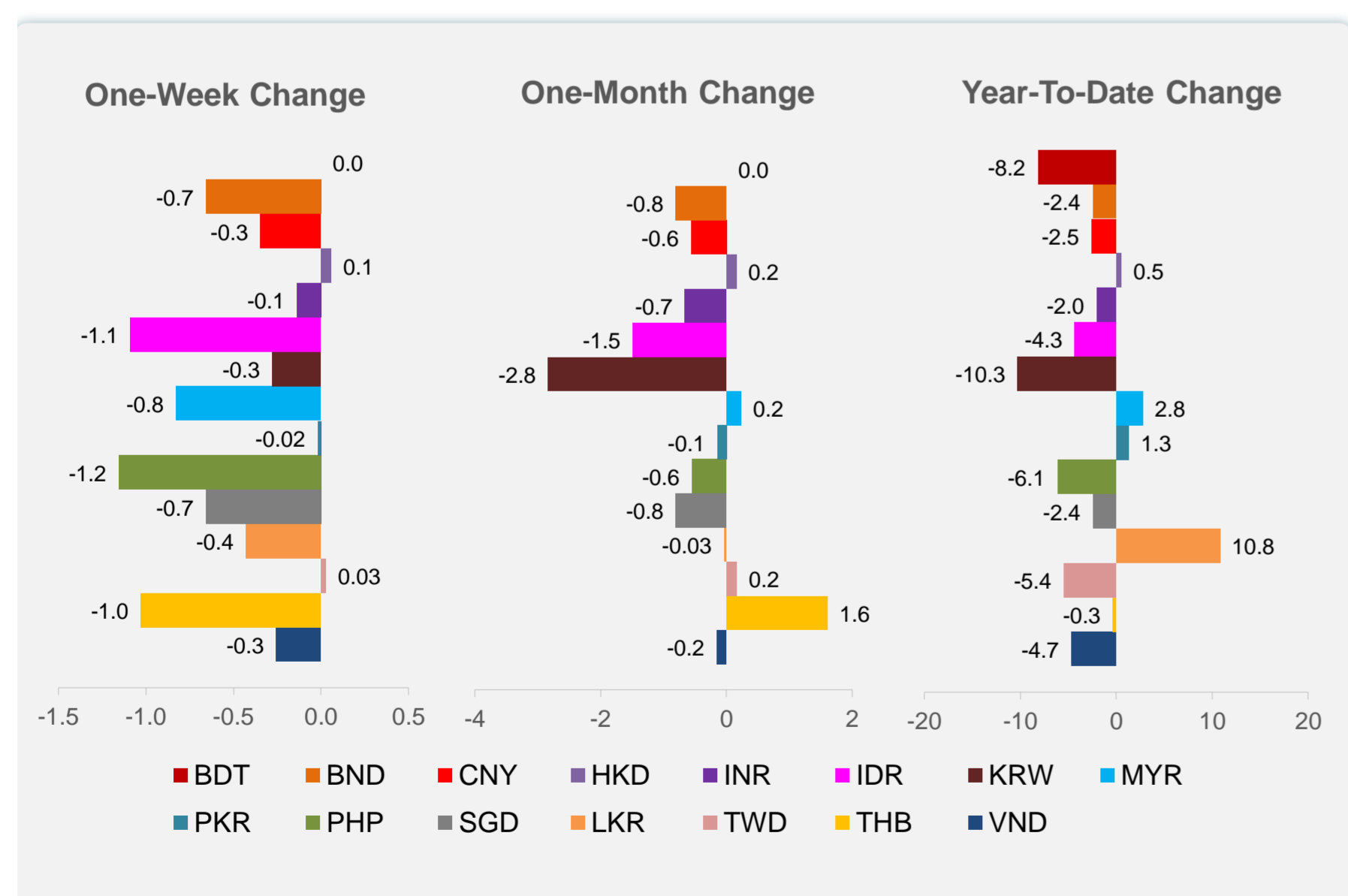
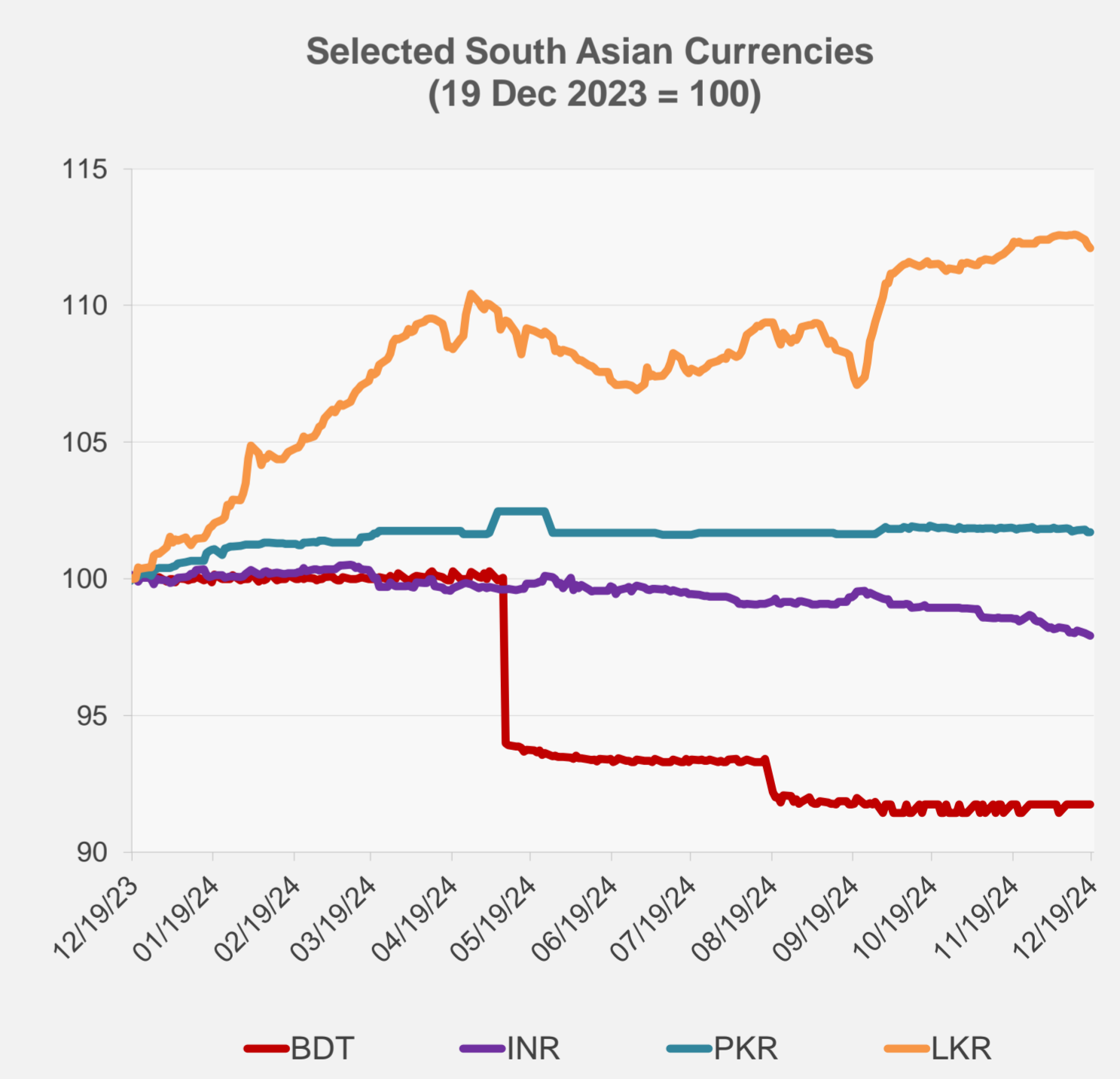
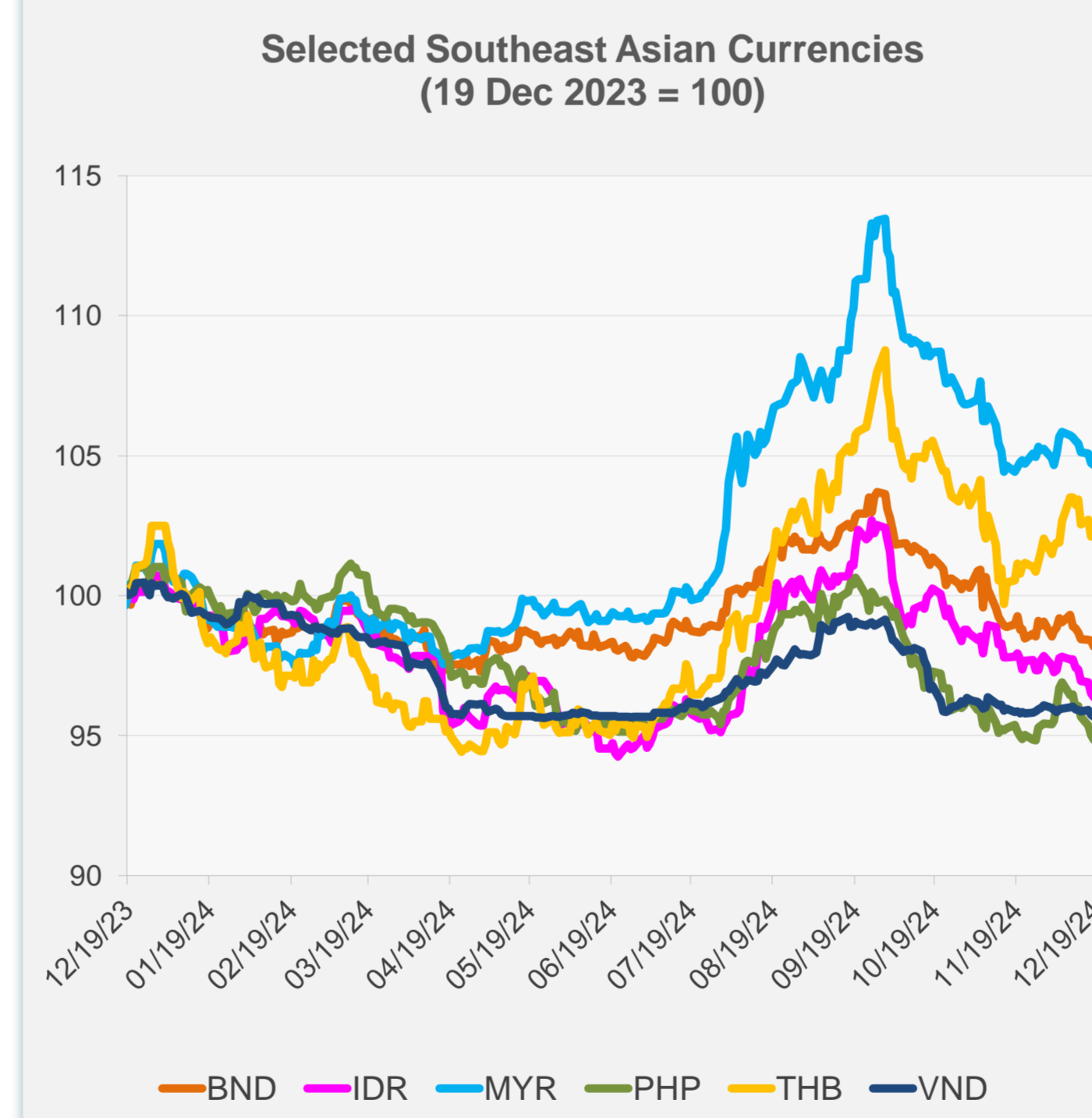


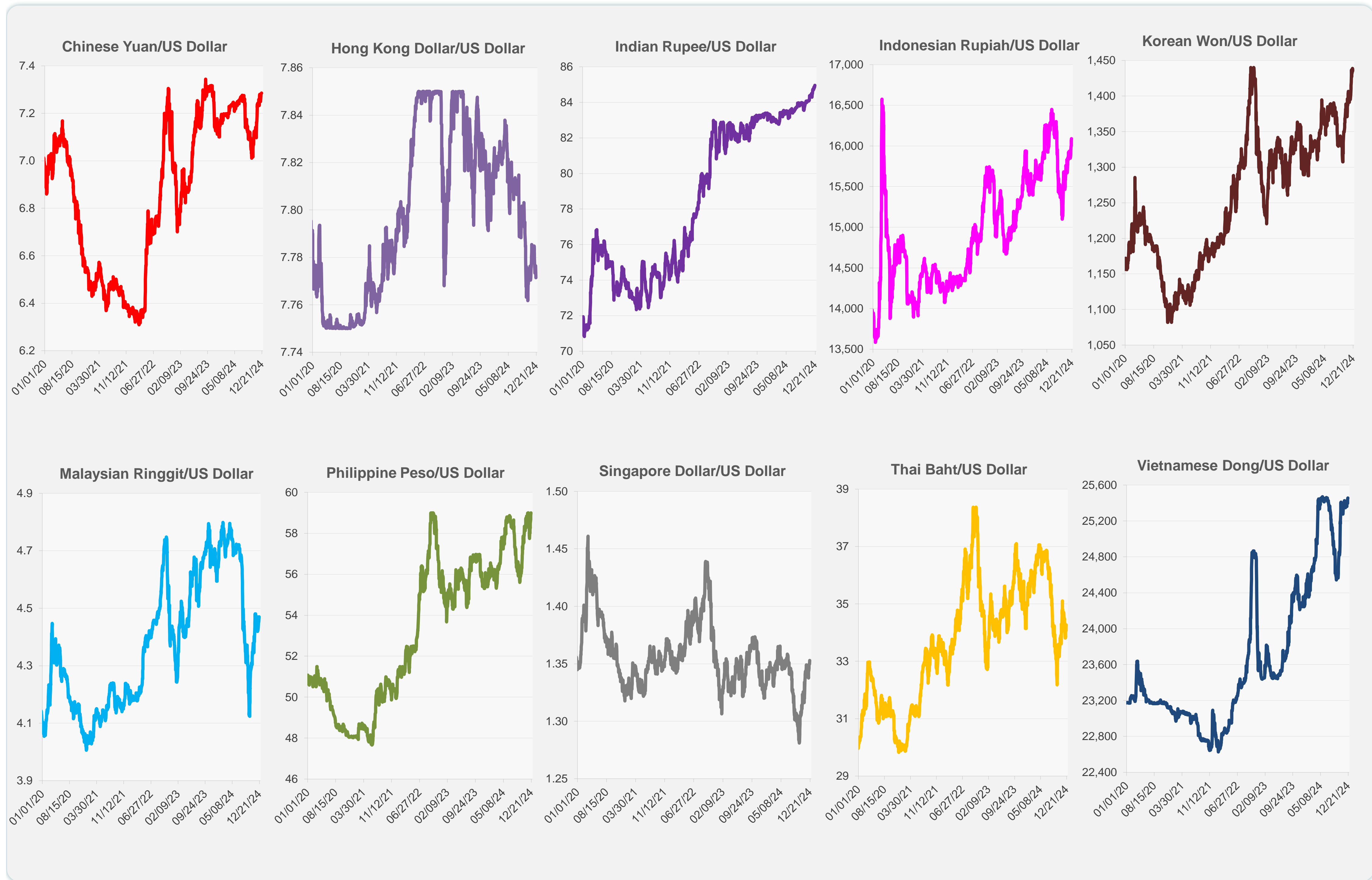
	Latest Closing	% change from Previous Day	% change from 01-Jan-24
Euro	0.95	-0.25	-5.19
Japanese yen (JPY)	154.05	-0.33	-8.54
Bangladeshi taka (BDT)	119.50	0.00	-8.16
Brunei dollar (BND)	1.35	-0.21	-2.41
Chinese yuan (CNY)	7.29	-0.02	-2.55
Hong Kong dollar (HKD)	7.77	0.01	0.52
Indian rupee (INR)	84.96	-0.06	-2.03
Indonesian rupiah (IDR)	16,090.00	-0.16	-4.31
Korean won (KRW)	1,435.90	0.22	-10.29
Malaysian ringgit (MYR)	4.47	-0.08	2.77
Pakistan rupee (PKR)	278.20	0.00	1.31
Philippine peso (PHP)	58.99	-0.19	-6.11
Singapore dollar (SGD)	1.35	-0.21	-2.41
Sri Lanka rupee (LKR)	291.45	-0.10	10.81
Taipei,China NT dollar (TWD)	32.48	0.14	-5.45
Thai baht (THB)	34.25	0.05	-0.33
Vietnamese dong (VND)	25,455.00	-0.06	-4.67



NIE = Newly Industrialized Economies



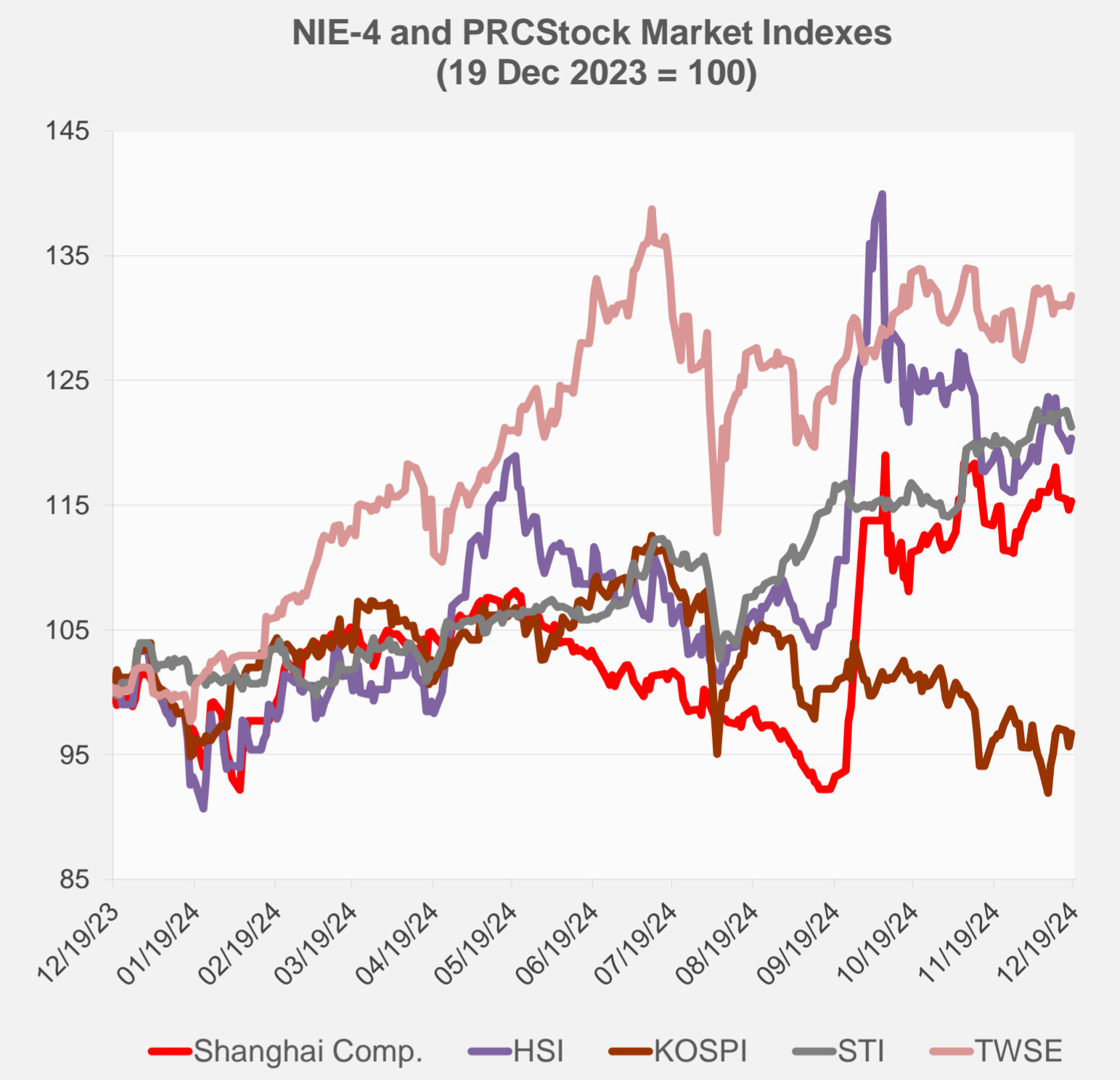
Note: Negative/Decreasing values indicate depreciation of local currency, and positive/increasing values indicate appreciation.  
Source: ADB calculations using data from Haver Analytics.



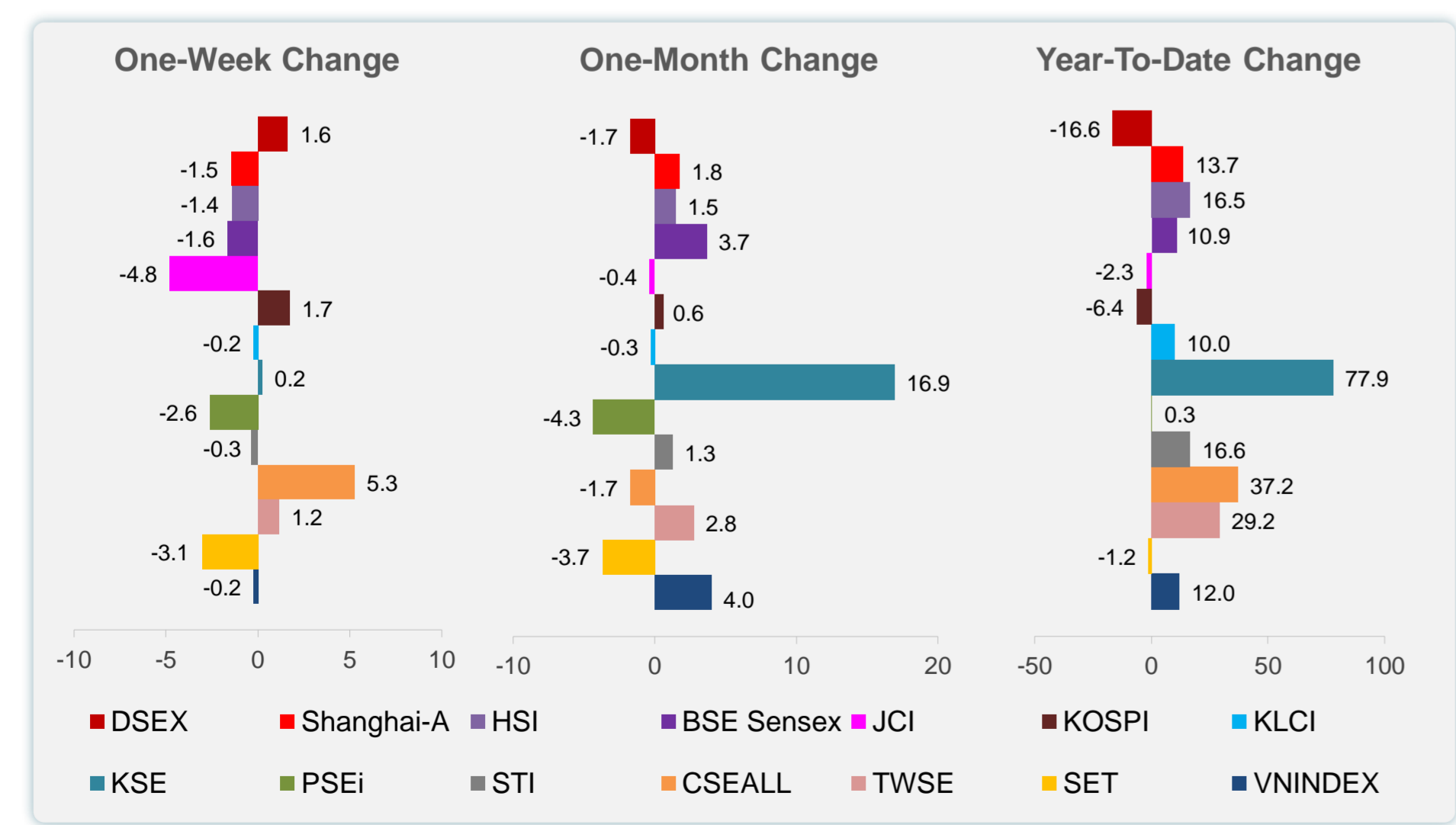
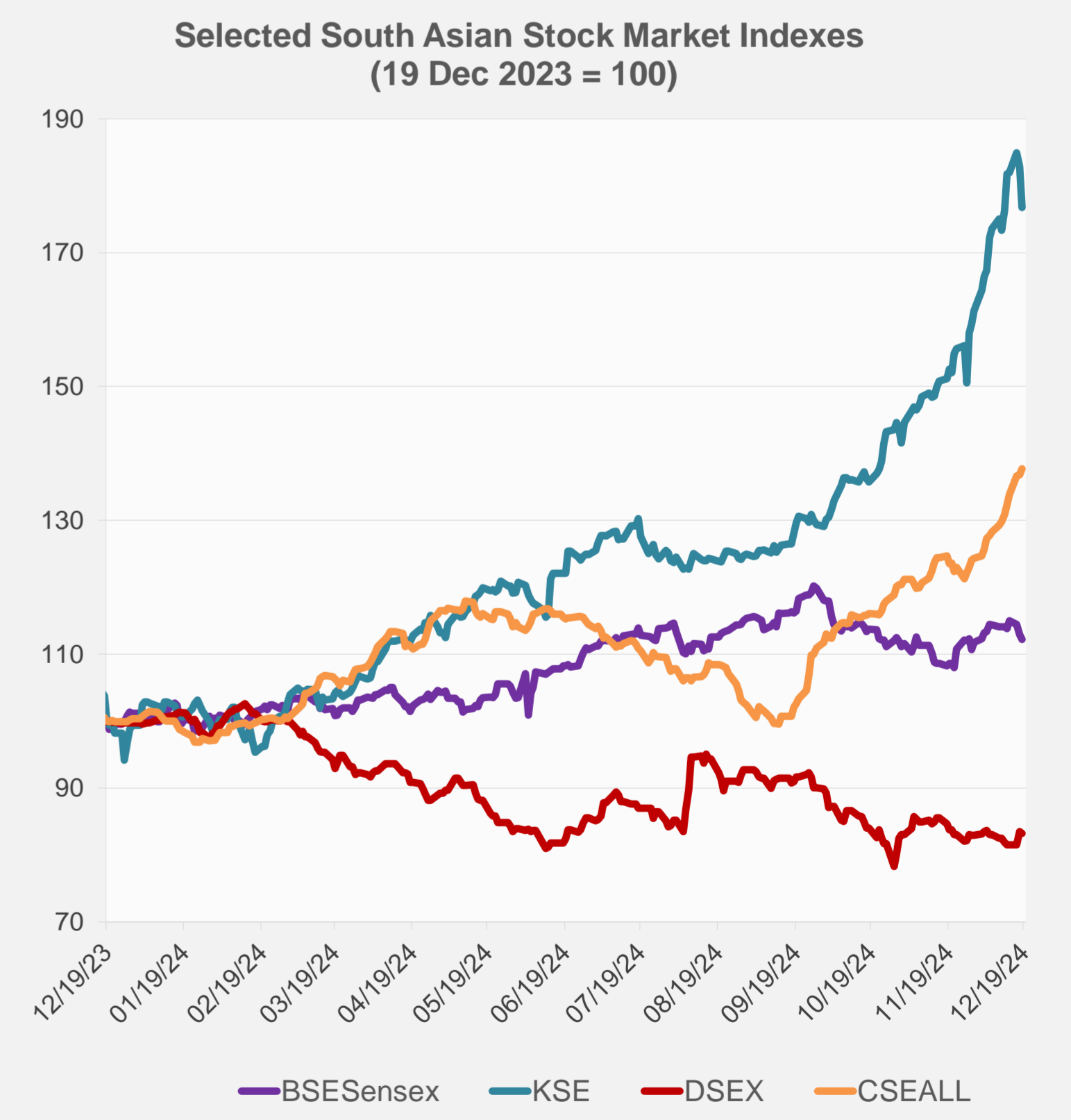
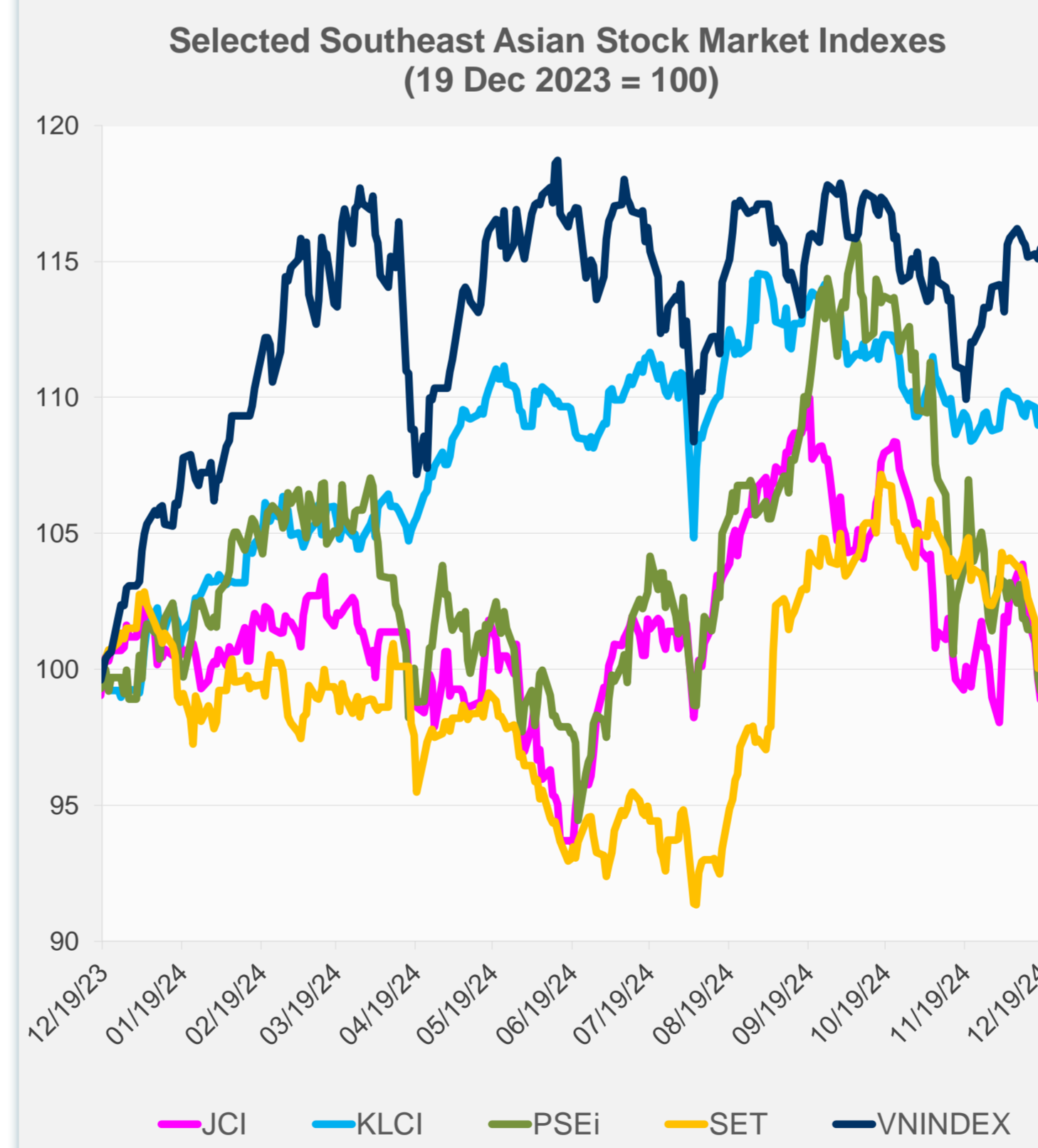
Source: Haver Analytics.

Daily Market Watch  
**STOCK INDEXES**

	Latest Closing	% change from Previous Day	% change from 01-Jan-24
US Dow Jones Ind Avg	42,326.87	-2.58	12.30
US NASDAQ	19,392.69	-3.56	29.19
US S&P 500	5,872.16	-2.95	23.11
UK FTSE 100	8,199.11	0.05	6.02
EURO STOXX 50	4,957.28	0.30	9.64
Japan NIKKEI 225	39,081.71	-0.72	16.79
Bangladesh DSEX	5,208.21	-0.31	-16.57
PRC Shanghai Comp.	3,382.21	0.62	13.69
Hong Kong, China HSI	19,864.55	0.83	16.53
India BSE Sensex	80,182.20	-0.62	10.95
Indonesia JCI	7,107.88	-0.70	-2.27
Korea, Rep. of KOSPI	2,484.43	1.12	-6.43
Malaysia KLCI	1,599.58	0.14	9.96
Pakistan KSE 100	111,070.29	-3.30	77.85
Philippines PSEi	6,469.08	-0.50	0.30
Singapore STI	3,779.62	-0.53	16.65
Sri Lanka CSEALL	14,614.30	0.67	37.17
Taipei, China TWSE	23,168.67	0.65	29.21
Thailand SET	1,398.95	0.24	-1.19
Viet Nam VNINDEX	1,266.00	0.34	12.04



NIE = Newly Industrialized Economies



Sources: ADB calculations using data from CEIC Data Company and Haver Analytics.



Sources: CEIC Data Company and Haver Analytics.

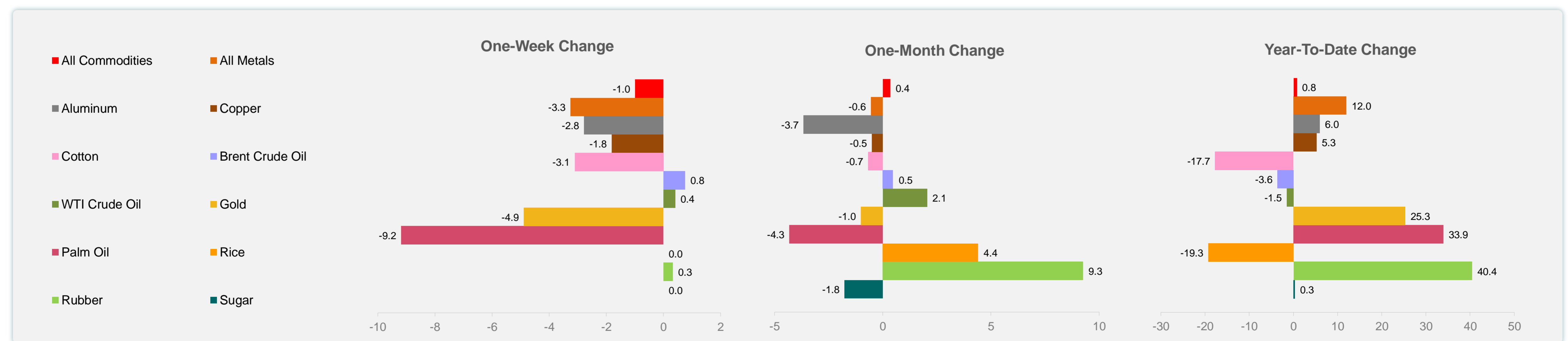
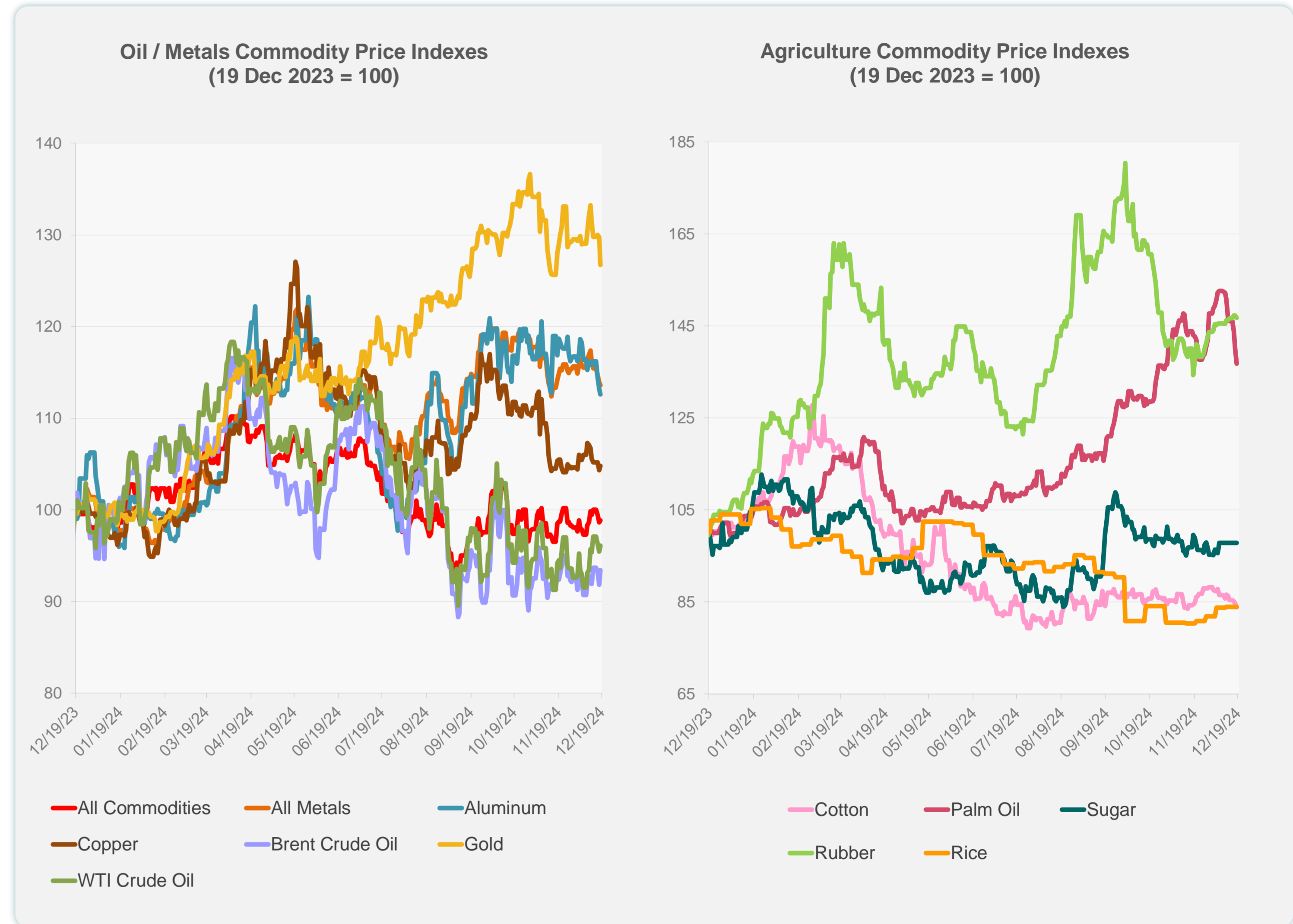
Daily Market Watch  
**COMMODITY PRICES**

19 December 2024, 9:00 AM Manila

	Unit	Latest Closing	% change from Previous Day	% change from 01-Jan-24
S&P All Commodities	US\$	539.94	0.22	0.80
S&P All Metals	US\$	310.71	-0.31	12.00
Aluminum	US\$/metric ton	2,485.87	-0.54	5.98
Copper	US\$/metric ton	8,909.54	0.46	5.26
Cotton	US cents/lb	64.58	-0.94	-17.73
Brent Crude Oil	US\$/barrel	74.81	1.75	-3.60
WTI Crude Oil	US\$/barrel	70.58	0.71	-1.49
Gold	US\$/troy oz	2,585.35	-2.32	25.32
Palm Oil	US\$/metric tonne	1,083.45	-2.39	33.93
Rice <sup>1</sup>	US\$/metric ton	544.00	0.00	-19.29
Rubber <sup>2</sup>	US\$/kg	243.10	-0.37	40.44
Sugar	US cents/lb	20.54	0.00	0.34

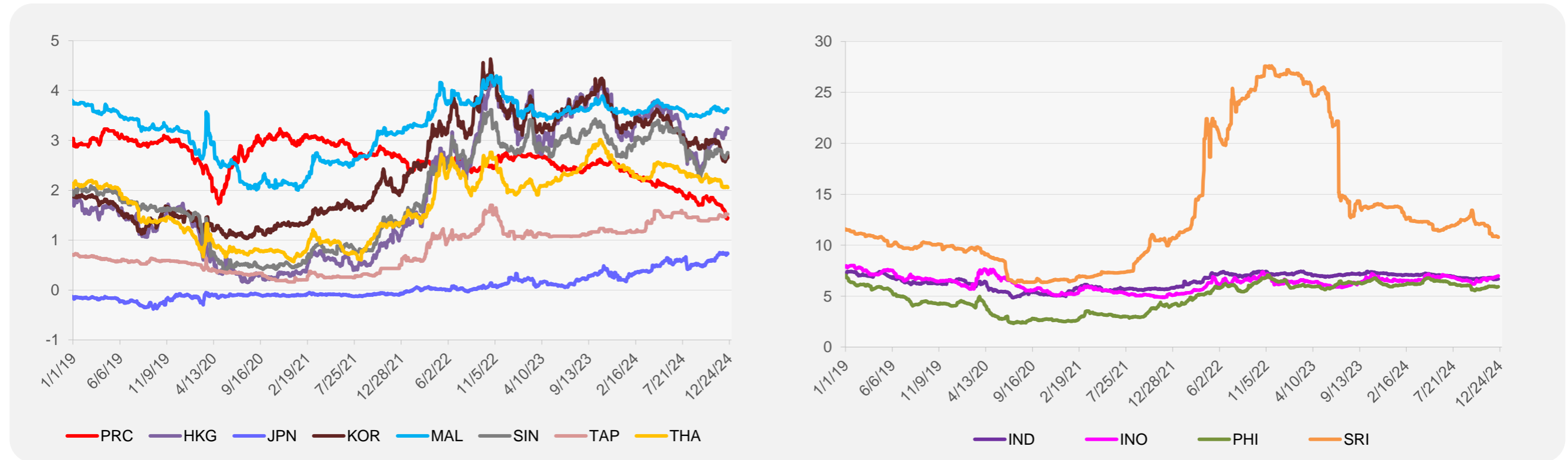
<sup>1</sup> Latest closing price from 12 December 2024.

<sup>2</sup> Singapore Exchange, Ribbed Smoked Sheet Rubber.

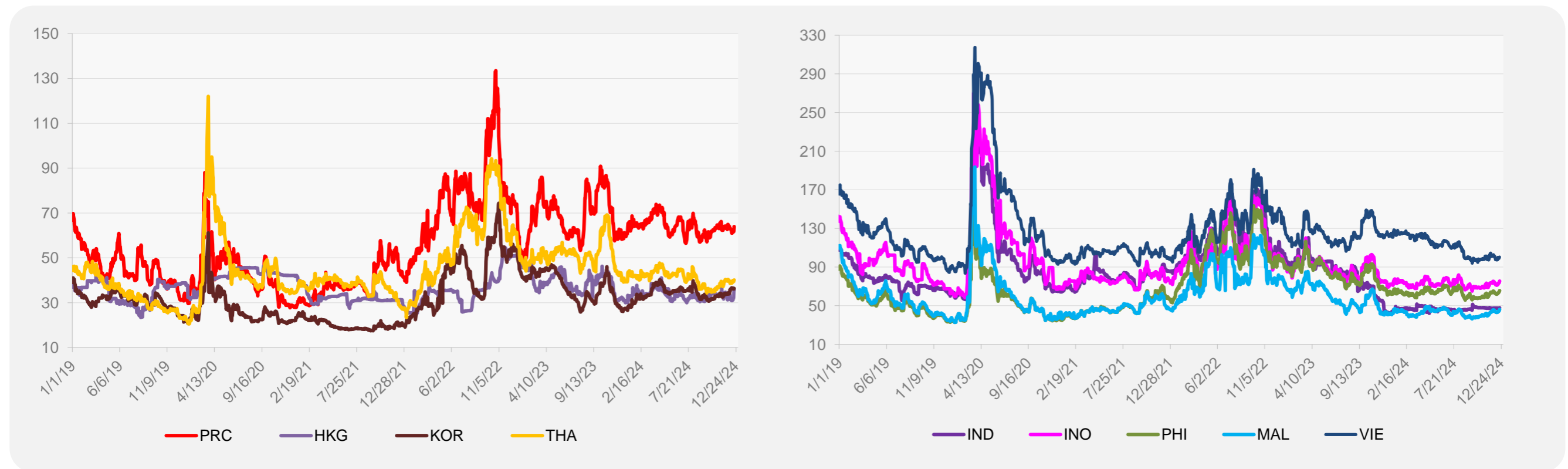


Source: ADB calculations using data from Bloomberg.

### 5-YEAR LOCAL CURRENCY GOVERNMENT BOND YIELDS (%)



### 5-YEAR CREDIT DEFAULT SWAP<sup>1</sup>



<sup>1</sup> In USD and based on sovereign bonds.  
Source: ADB calculations using data from Bloomberg.